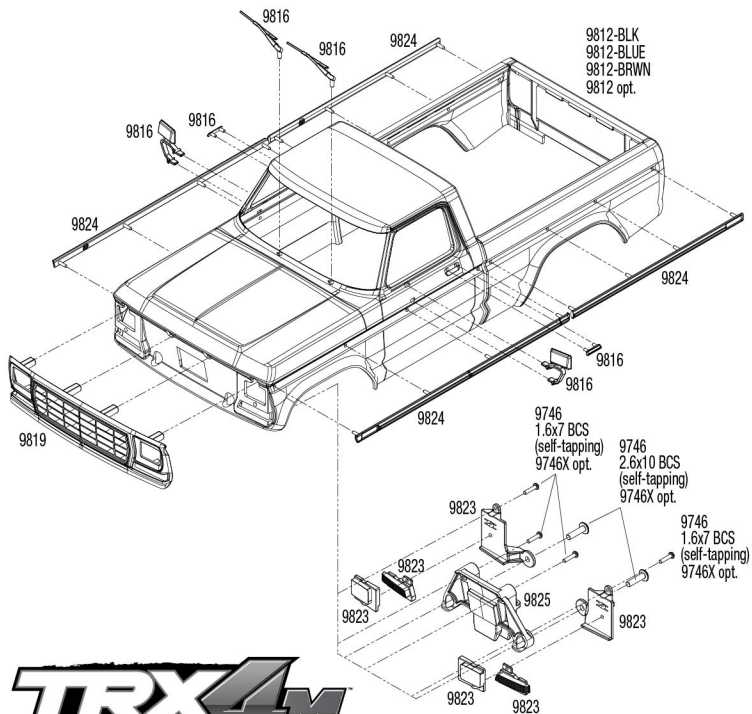
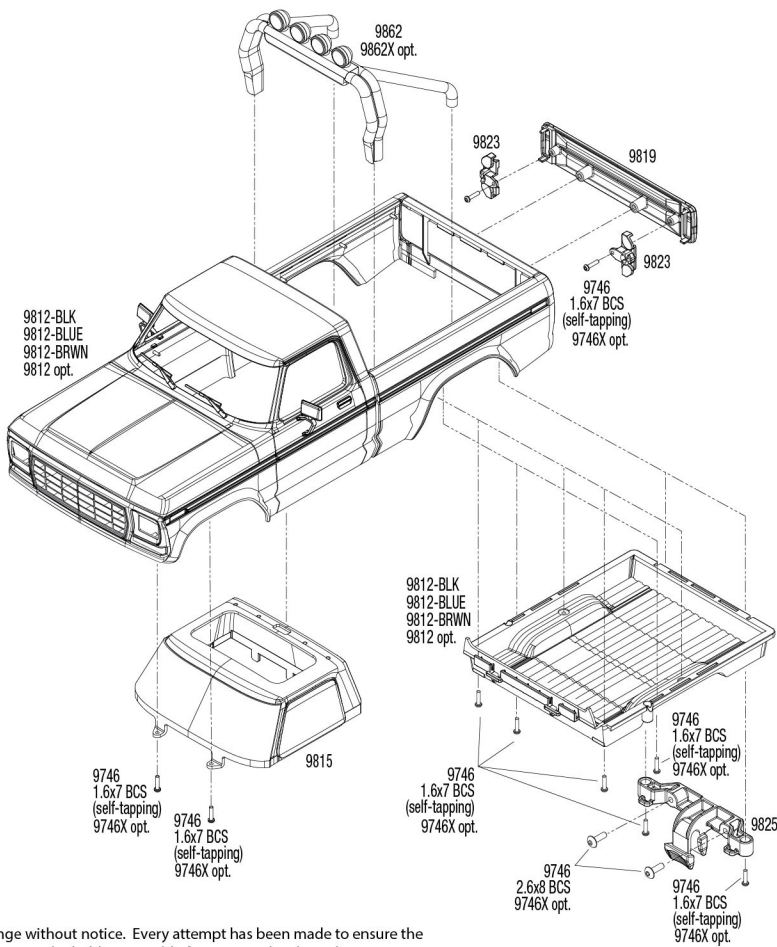


TRAXXAS



9812-BLK
9812-BLUE
9812-BRWN
9812 opt.

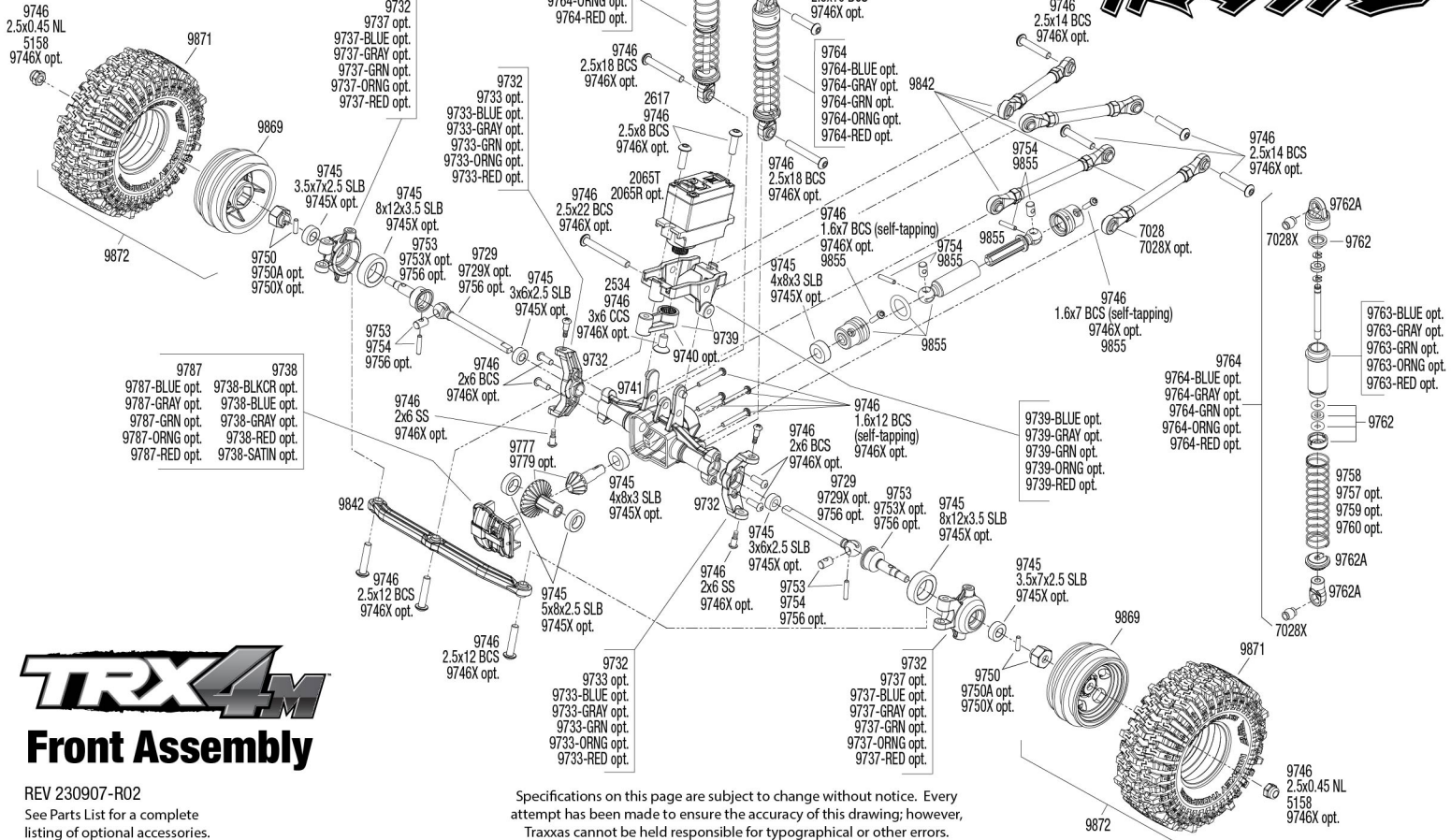


TRX4M Body Assembly

See Parts List for a complete listing of optional accessories.

Specifications on this page are subject to change without notice. Every attempt has been made to ensure the accuracy of this drawing; however, Traxxas cannot be held responsible for typographical or other errors.

TRAXXAS



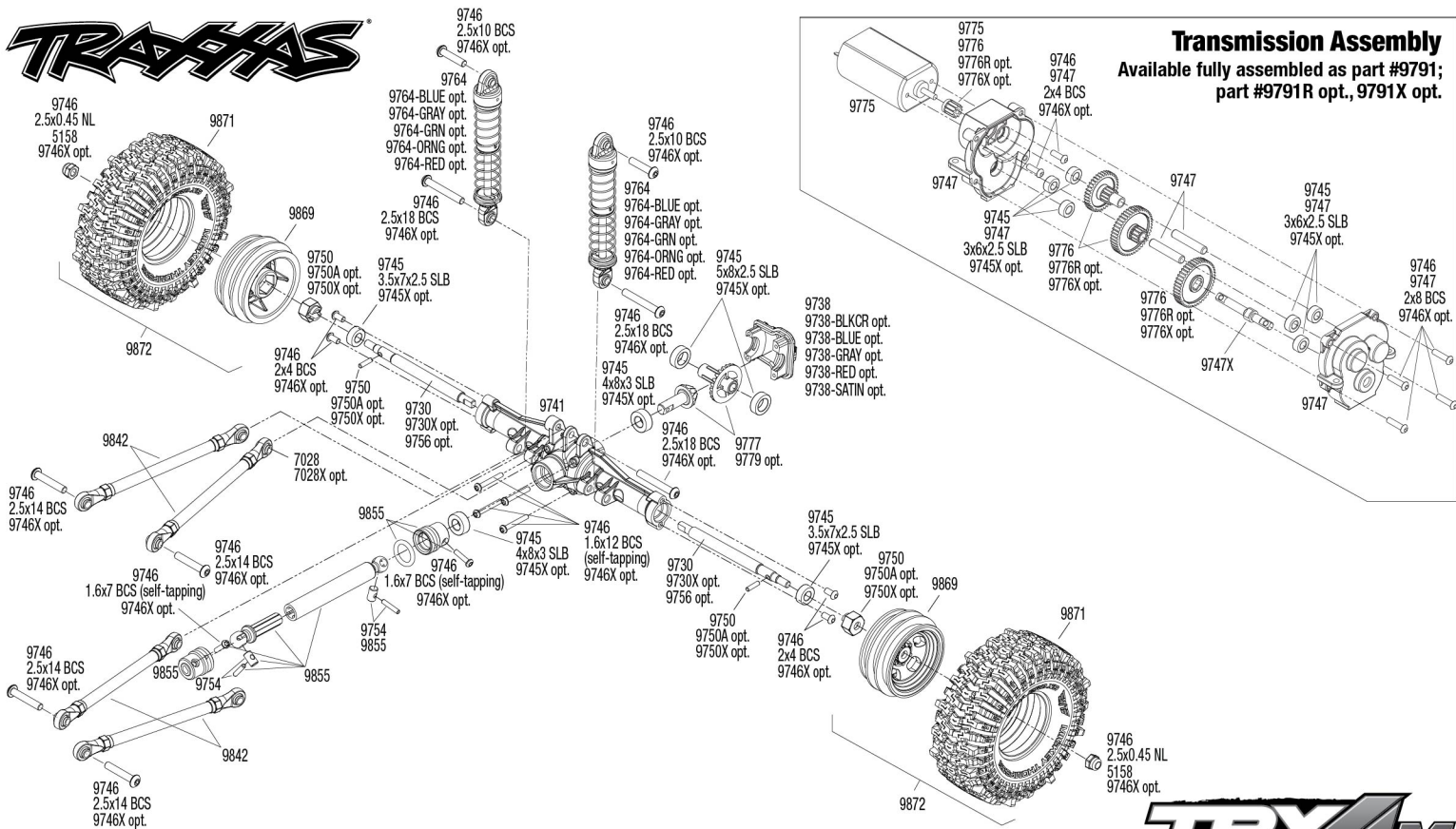
TRX4M

Front Assembly

REV 230907-R02
See Parts List for a complete listing of optional accessories.

Specifications on this page are subject to change without notice. Every attempt has been made to ensure the accuracy of this drawing; however, Traxxas cannot be held responsible for typographical or other errors.

TRAXXAS



REV 230907-R02

See Parts List for a complete listing of optional accessories.

Specifications on this page are subject to change without notice. Every attempt has been made to ensure the accuracy of this drawing; however, Traxxas cannot be held responsible for typographical or other errors.

TRX4M

Rear Assembly



TRX-4M™ 1/18 1979 Ford® F-150® High Trail Edition™ (Model 97044-1) Parts List

Parts shown in bold are optional accessories. Part categories and individual part listings are arranged alphabetically.

Axle Components

9787-BLUE	Axle cover, 6061-T6 aluminum (blue-anodized) (2)/ 1.6x12mm BCS (with threadlock) (8)
9787-GRAY	Axle cover, 6061-T6 aluminum (dark titanium-anodized) (2)/ 1.6x12mm BCS (with threadlock) (8)
9787-GRN	Axle cover, 6061-T6 aluminum (green-anodized) (2)/ 1.6x12mm BCS (with threadlock) (8)
9787-ORNG	Axle cover, 6061-T6 aluminum (orange-anodized) (2)/ 1.6x12mm BCS (with threadlock) (8)
9787-RED	Axle cover, 6061-T6 aluminum (red-anodized) (2)/ 1.6x12mm BCS (with threadlock) (8)
9787	Axle cover, brass (8 grams each) (2)/ 1.6x12mm CS (with threadlock) (8)
9738-BLKCR	Axle cover, front or rear (black chrome) (2)
9738	Axle cover, front or rear (black) (2)
9738-BLUE	Axle cover, front or rear (blue) (2)
9738-GRAY	Axle cover, front or rear (gray) (2)
9738-RED	Axle cover, front or rear (red) (2)
9738-SATIN	Axle cover, front or rear (satin chrome) (2)
9741	Axle housing, front & rear
9729X	Axle shaft, front (hardened steel) (1)
9730X	Axle shaft, rear (hardened steel) (1)
9756	Axle shafts, front (2), rear (2)/ stub axles, front (2) (hardened steel)/ 1.5x7.8mm pins (2)/ 1.5x6mm pins (4)/ cross pins (2)
9729	Axle shafts, front, outer (2)
9730	Axle shafts, rear, outer (2)
9743	Axle, front (assembled)/ M2.5x0.45 NL (2)
9744	Axle, rear (assembled)/ M2.5x0.45 NL (2)
9779	Gears, axle (metal, front & rear)
9754	Rebuild kit, constant-velocity driveshaft (includes pins for 2 driveshaft assemblies) (for front driveshafts or #9751 metal center driveshafts)
9777	Ring gear, axle (2)/ pinion gear, axle (2)
9765	Skidplate, axle, front or rear (stainless steel) (2)
9753	Stub axle, front (2)/ cross pins (2)/ drive pins (4)
9753X	Stub axle, front (hardened steel) (1)

Bearings & Bushings

9745X	Ball bearing kit, black rubber sealed, complete (3x6x2.5mm (8), 5x8x2.5mm (4), 4x8x3mm (4), 8x12x3.5mm (2), 3.5x7x2.5mm (4))
9745R	Ball bearing kit, transmission, black rubber sealed (contains 3x6x2.5mm bearings (6))
9745	Bushing kit, self-lubricating, complete (3x6x2.5mm (8), 5x8x2.5mm (4), 4x8x3mm (4), 8x12x3.5mm (2), 3.5x7x2.5mm (4))

Body & Accessories (1979 Chevrolet® K10 Truck)

9811	Body, Chevrolet K10 Truck (1979), complete (unassembled) (white, requires painting) (includes grille, side mirrors, door handles, roll bar, windshield wipers, & clipless mounting) (requires #9835 front & rear bumpers)
9811-BLK	Body, Chevrolet K10 Truck (1979), complete, black (includes grille, side mirrors, door handles, roll bar, windshield wipers, & clipless mounting) (requires #9835 front & rear bumpers)
9811-BLUE	Body, Chevrolet K10 Truck (1979), complete, blue (includes grille, side mirrors, door handles, roll bar, windshield wipers, & clipless mounting) (requires #9835 front & rear bumpers)
9811-RED	Body, Chevrolet K10 Truck (1979), complete, red (includes grille, side mirrors, door handles, roll bar, windshield wipers, & clipless mounting) (requires #9835 front & rear bumpers)
9827	Decal sheet, 1/18 scale TRX-4M™ Chevrolet K10 Truck (1979)
9817	Door handles (left & right)/ mirrors, side (left & right)/ windshield wipers (fits #9811 body)
9820	Front grille/ tailgate panel/ LED lenses (rear, left, & right) (fits #9811 body)
9813	Latch, body mount, front (1)/ rear (1) (for clipless body mounting) (attaches to #9811 body)
9818	LED lenses, body, front & rear (complete set) (fits #9811 body)
9814	Windows, body (fits #9811 body)
9814X	Windows, body (tinted) (fits #9811 body)

Body & Accessories (1979 Ford® F-150® Truck)

9812	Body, Ford F-150 Truck (1979), complete (unassembled) (white, requires painting) (includes grille, side mirrors, door handles, roll bar, windshield wipers, side trim, & clipless mounting) (requires #9834 front & rear bumpers)
-------------	--

9812-BLK	Body, Ford F-150 Truck (1979), complete, black (includes grille, side mirrors, door handles, roll bar, windshield wipers, side trim, & clipless mounting) (requires #9834 front & rear bumpers)
9812-BLUE	Body, Ford F-150 Truck (1979), complete, blue (includes grille, side mirrors, door handles, roll bar, windshield wipers, side trim, & clipless mounting) (requires #9834 front & rear bumpers)
9812-BRWN	Body, Ford F-150 Truck (1979), complete, brown (includes grille, side mirrors, door handles, roll bar, windshield wipers, side trim, & clipless mounting) (requires #9834 front & rear bumpers)
9812-RED	Body, Ford F-150 Truck (1979), complete, red (includes grille, side mirrors, door handles, roll bar, windshield wipers, side trim, & clipless mounting) (requires #9834 front & rear bumpers)
9812-WHT	Body, Ford F-150 Truck (1979), complete, white (includes grille, side mirrors, door handles, roll bar, windshield wipers, side trim, & clipless mounting) (requires #9834 front & rear bumpers)
9828	Decal sheet, Ford F-150 Truck (1979)
9816	Door handles (left & right)/ mirrors, side (left & right)/ windshield wipers (fits #9812 body)
9819	Front grille/ tailgate panel (white, requires painting)/ LED lenses (rear, left & right) (fits #9812 body)
9825	Latch, body mount, front (1)/ rear (1) (for clipless body mounting) (attaches to #9812 body)
9823	LED lenses, body, front & rear (complete set) (fits #9812 body)
9824	Side trim, left & right (chrome) (fits #9812 body)
9815	Windows, body (fits #9812 body)
9815X	Windows, body (tinted) (fits #9812 body)

Bumpers & Skidplates

9837	Bumper mount (front (1)/ rear (1))
9834	Bumper, front (1)/ rear (1)
9765	Skidplate, axle, front or rear (stainless steel) (2)
9766	Skidplate, chassis (stainless steel)

Chassis & Attachments

9727	Battery strap
9836	Bumper mount (front (1)/ rear (1))
9822	Chassis rails, 220mm (steel) (left & right)
9739-BLUE	Servo mount, 6061-T6 aluminum (blue-anodized)
9739-GRAY	Servo mount, 6061-T6 aluminum (dark titanium-anodized)
9739-GRN	Servo mount, 6061-T6 aluminum (green-anodized)
9739-ORNG	Servo mount, 6061-T6 aluminum (orange-anodized)
9739-RED	Servo mount, 6061-T6 aluminum (red-anodized)
9739	Servo mount, steering/ servo horn
9826	Shock mounts (front & rear)/ trailer hitch (extended)
9766	Skidplate, chassis (stainless steel)

Driveline Components

9855	Driveshafts, center, assembled (front & rear) (fits 1/18 scale vehicles with long wheelbase)
------	--

Hardware

9746	Hardware kit, complete (contains all hardware used on 1/18-scale TRX-4M™) (includes clear plastic storage container)
9746X	Hardware kit, stainless steel, complete (contains all stainless steel hardware used on 1/18-scale TRX-4M™) (includes body hardware and clear plastic storage container)

LED Lights

9786	Wire harness, LED lights (front)/ zip ties (2)
------	--

Motors & Electronics

9785	ECM-2.5 Electronic Control Module, waterproof (low voltage detection, fwd/rev/brake)
2064R	Gear set, metal (for 2065R waterproof sub-micro servo)
9793-BLUE	Heat sink, Titan® 87T motor (6061-T6 aluminum, blue-anodized)
9793-GRAY	Heat sink, Titan® 87T motor (6061-T6 aluminum, dark titanium-anodized)
9793-GRN	Heat sink, Titan® 87T motor (6061-T6 aluminum, green-anodized)
9793-ORNG	Heat sink, Titan® 87T motor (6061-T6 aluminum, orange-anodized)
9793-RED	Heat sink, Titan® 87T motor (6061-T6 aluminum, red-anodized)
9775	Motor, Titan® 87T (87-turn, 180 size)/ pinion gear, 11-tooth (metal)
2063A	Servo case/gaskets (for 2065A waterproof sub-micro servo)
9740	Servo horn (metal)
2065T	Servo, sub-micro, waterproof
2065R	Servo, sub-micro, waterproof, metal gear

Radio System, Batteries & Chargers

2821	750mAh 7.4V 2-Cell 20C LiPo Battery
2914	AA 4PK
9767	Charger, iD® Balance, USB (2-cell 7.4 volt LiPo with iD® connector only)
2064A	Gear set (for 2065A waterproof sub-micro servo)
2064R	Gear set, metal (for 2065R waterproof sub-micro servo)
2063A	Servo case/gaskets (for 2065A waterproof sub-micro servo)
9740	Servo horn (metal)
2065T	Servo, sub-micro, waterproof
2065R	Servo, sub-micro, waterproof, metal gear

Ready-To-Race Model

97044-1	TRX-4M™ Scale and Trail® Crawler with 1979 Ford® F-150® Truck Body: 1/18-Scale 4WD Electric Truck with TQ 2.4GHz Radio System
---------	---

Scale Accessories

9796	Trailer hitch (assembled)/ trailer coupler/ 3mm spring pre-load spacers (2)/ 2.5x8mm BCS (2)/ 1.6x10mm BCS (self-tapping) (1)
9797	Trailer wheels (2)/ tires (2)/ mounting hardware
9795	Utility trailer/ trailer hitch (assembled)/ 3mm spring pre-load spacers (2)/ 2.5x8mm BCS (2)

Shock Oil

5031	Oil, shock (20 wt, 200 cSt, 60cc) (silicone)
5032	Oil, shock (30 wt, 350 cSt, 60cc) (silicone)
5033	Oil, shock (40 wt, 500 cSt, 60cc) (silicone)
5034	Oil, shock (50 wt, 600 cSt, 60cc) (silicone)
5035	Oil, shock (60 wt, 700 cSt, 60cc) (silicone)
5036	Oil, shock (70 wt, 900 cSt, 60cc) (silicone)
5037	Oil, shock (80 wt, 1,000 cSt, 60cc) (silicone)
5029	Shock oil bottle (60cc) (for mixing shock oil)
5038X	Shock oil set (includes 20 wt, 30 wt, 40 wt, 50 wt, 60 wt, 70 wt, & 80 wt premium shock oils with spinning carousel rack)
5038	Spinning carousel rack

Shocks

9763-BLUE	Body, GTM shock, 6061-T6 aluminum (blue-anodized) (includes spring pre-load spacers) (2)
9763-GRAY	Body, GTM shock, 6061-T6 aluminum (dark titanium-anodized) (includes spring pre-load spacers) (2)
9763-GRN	Body, GTM shock, 6061-T6 aluminum (green-anodized) (includes spring pre-load spacers) (2)
9763-ORNG	Body, GTM shock, 6061-T6 aluminum (orange-anodized) (includes spring pre-load spacers) (2)
9763-RED	Body, GTM shock, 6061-T6 aluminum (red-anodized) (includes spring pre-load spacers) (2)
9761A	Lower retainer, shock, brass (1 gram each) (4)
9762	Rebuild kit, GTM shock (o-rings, spacers, bladders, bottom caps) (renews 2 shocks)
9762A	Shock cap (2)/ spring perch (2)/ rod end (2)/ spring preload spacer (4)
9764	Shocks, GTM (assembled w/o springs) (2)
9764-BLUE	Shocks, GTM, 6061-T6 aluminum (blue-anodized) (fully assembled w/o springs) (4)
9764-GRAY	Shocks, GTM, 6061-T6 aluminum (dark titanium-anodized) (fully assembled w/o springs) (4)
9764-GRN	Shocks, GTM, 6061-T6 aluminum (green-anodized) (fully assembled w/o springs) (4)
9764-ORNG	Shocks, GTM, 6061-T6 aluminum (orange-anodized) (fully assembled w/o springs) (4)
9764-RED	Shocks, GTM, 6061-T6 aluminum (red-anodized) (fully assembled w/o springs) (4)
9757	Spring, shock (GTM) (0.072 rate) (1 pair)
9758	Spring, shock (GTM) (0.095 rate) (1 pair)
9759	Spring, shock (GTM) (0.123 rate) (1 pair)
9760	Spring, shock (GTM) (0.155 rate) (1 pair)

Springs

9757	Spring, shock (GTM) (0.072 rate) (1 pair)
9758	Spring, shock (GTM) (0.095 rate) (1 pair)
9759	Spring, shock (GTM) (0.123 rate) (1 pair)
9760	Spring, shock (GTM) (0.155 rate) (1 pair)

Steering Components

9733-BLUE	Caster blocks, 6061-T6 aluminum (blue-anodized) (left & right)
9733-GRAY	Caster blocks, 6061-T6 aluminum (dark titanium-anodized) (left & right)
9733-GRN	Caster blocks, 6061-T6 aluminum (green-anodized) (left & right)
9733-ORNG	Caster blocks, 6061-T6 aluminum (orange-anodized) (left & right)
9733-RED	Caster blocks, 6061-T6 aluminum (red-anodized) (left & right)
9733	Caster blocks, brass (4 grams each) (left & right)
9737-BLUE	Steering blocks, 6061-T6 aluminum (blue-anodized) (left & right)/ 2.5x12mm BCS (with threadlock) (2)/ 2x6mm SS (with threadlock) (4)

9737-GRAY	Steering blocks, 6061-T6 aluminum (dark titanium-anodized) (left & right)/ 2.5x12mm BCS (with threadlock) (2)/ 2x6mm SS (with threadlock) (4)
9737-GRN	Steering blocks, 6061-T6 aluminum (green-anodized) (left & right)/ 2.5x12mm BCS (with threadlock) (2)/ 2x6mm SS (with threadlock) (4)
9737-ORNG	Steering blocks, 6061-T6 aluminum (orange-anodized) (left & right)/ 2.5x12mm BCS (with threadlock) (2)/ 2x6mm SS (with threadlock) (4)
9737-RED	Steering blocks, 6061-T6 aluminum (red-anodized) (left & right)/ 2.5x12mm BCS (with threadlock) (2)/ 2x6mm SS (with threadlock) (4)
9737	Steering blocks, brass (7 grams each) (left & right)/ 2.5x12mm BCS (with threadlock) (2)/ 2x6mm SS (with threadlock) (4)
9732	Steering blocks, left & right/ caster blocks (c-hubs), left or right (2)
9748-BLUE	Steering link, 6061-T6 aluminum (blue-anodized)/ servo horn, metal/ spacers (2)/ 3x6mm CCS (with threadlock) (1)/ 2.5x7mm SS (with threadlock) (1)
9748-GRAY	Steering link, 6061-T6 aluminum (dark titanium-anodized)/ servo horn, metal/ spacers (2)/ 3x6mm CCS (with threadlock) (1)/ 2.5x7mm SS (with threadlock) (1)
9748-GRN	Steering link, 6061-T6 aluminum (green-anodized)/ servo horn, metal/ spacers (2)/ 3x6mm CCS (with threadlock) (1)/ 2.5x7mm SS (with threadlock) (1)
9748-ORNG	Steering link, 6061-T6 aluminum (orange-anodized)/ servo horn, metal/ spacers (2)/ 3x6mm CCS (with threadlock) (1)/ 2.5x7mm SS (with threadlock) (1)
9748-RED	Steering link, 6061-T6 aluminum (red-anodized)/ servo horn, metal/ spacers (2)/ 3x6mm CCS (with threadlock) (1)/ 2.5x7mm SS (with threadlock) (1)
9842	Suspension link set, complete (front & rear) (includes steering link (1), front lower links (2), front upper links (2), rear links (4)) (assembled with hollow balls) (fits 1/18 scale vehicles with long wheelbase)

Suspension Linkage

7028	Hollow balls (20)
7028X	Hollow balls, steel (machined) (22)
7059	Rod ends (8)/ hollow balls (8) (fits 1/16 and 1/18 accessory suspension links)
9842	Suspension link set, complete (front & rear) (includes steering link (1), front lower links (2), front upper links (2), rear links (4)) (assembled with hollow balls) (fits 1/18 scale vehicles with long wheelbase)

Team Traxxas Items

9916	Backpack, RC car carrier, 12" x 12" x 24" (fits TRX-4 & similar)
2514	Decal sheet, racing sponsors
9917	Duffel bag, medium, 30" x 12" x 12" (fits 1/10 Slash®, TRX-4®, & similar)
9950	Official Team Traxxas® racing decal set(flag logo/ 6-color)
9909	Traxxas® racing banner, red & black (3x7 feet)

Tires & Wheels

9874	Foam inserts, 1.0" (firm) (2)
9875	Foam inserts, 1.0" (soft) (2)
9872	Tires & wheels, assembled (1.0" satin chrome wheels, Mickey Thompson® Baja Pro™ Xs 2.4x1.0" tires) (2)
9774	Tires & wheels, assembled (black 1.0" wheels, BFGoodrich® Mud-Terrain™ T/A® KM3 2.2x1.0" tires) (2)
9773	Tires & wheels, assembled (black 1.0" wheels, Canyon Trail 2.2x1.0" tires) (2)
9771	Tires, BFGoodrich® Mud-Terrain™ T/A® KM3 2.2x1.0" (2)
9769	Tires, Canyon Trail 2.2x1.0" (2)
9782	Tires, Mickey Thompson® Baja Pro™ X 2.2x1.0" (2)
9871	Tires, Mickey Thompson® Baja Pro™ Xs 2.4x1.0" (2)
9750	Wheel hubs, 7mm hex (4)/ axle pins (8)
9750A	Wheel hubs, 7mm hex (steel) (4)/ axle pins (8)
9750X	Wheel hubs, 7mm hex, brass (1 gram each) (4)/ axle pins (8)
9780	Wheel weights, brass (31 grams each) (2) (requires #9781 series wheels)
9768-BLKCR	Wheels, 1.0" (black chrome) (2)
9770-BLKCR	Wheels, 1.0" (black chrome) (2)
9768	Wheels, 1.0" (black) (2)
9770	Wheels, 1.0" (black) (2)
9770-SATIN	Wheels, 1.0" (satin chrome) (2)
9869	Wheels, 1.0" (satin chrome) (2)
9768-SATIN	Wheels, 1.0" (satin chrome) (2)
9781	Wheels, 1.0", Method Race Wheels® 105 Beadlock (black, beadlock) (2)
9781-BLKBL	Wheels, 1.0", Method Race Wheels® 105 Beadlock (satin black chrome with blue beadlock) (2)
9781-SATIN	Wheels, 1.0", Method Race Wheels® 105 Beadlock (satin chrome, beadlock) (2)

Transmission Components

9745R	Ball bearing kit, transmission, black rubber sealed (contains 3x6x2.5mm bearings (6))
9776	Gear set, transmission, high range (trail) (16.6:1 reduction ratio)/ pinion gear, 11-tooth
9776R	Gear set, transmission, low range (crawl) (40.3:1 reduction ratio)/ pinion gear, 11-tooth
9776X	Gear set, transmission, speed (9.7:1 reduction ratio)/ pinion gear, 11-tooth
9747	Gearbox housing (front & rear)/ 2x4mm BCS (with threadlock) (2)/ 2x8mm BCS (4)/ 3x6x2.5mm bushings, self-lubricating (6)/ 3x16mm pins (2)
9747X	Output shaft, transmission
9791	Transmission, complete (high range (trail) gearing) (16.6:1 reduction ratio) (assembled with ball bearings) (includes Titan® 87T motor)
9791R	Transmission, complete (low range (crawl) gearing) (40.3:1 reduction ratio) (assembled with ball bearings) (includes Titan® 87T motor)
9791X	Transmission, complete (speed gearing) (9.7:1 reduction ratio) (assembled with ball bearings) (includes Titan® 87T motor)

Traxxas Tools

3433X	Body reamer (aluminum handle)
3433	Body reamer (plastic handle)
3436	Cap, body reamer
3432	Scissors, curved tip
3431	Scissors, straight tip
8712	Speed Bit Essentials Set, hex and nut driver, 7-piece, includes premium handle (medium), travel pouch, hex drivers (straight: 1.5mm, 2.0mm, 2.5mm) and nut drivers (5.0mm, 5.5mm, 7.0mm, and 8.0mm), 1/4" drive
8720	Speed bit handle, large (overmolded)
8721	Speed bit handle, medium (one piece)
8722	Speed bit handle, premium (rubber overmold)
8710	Speed Bit Master Set, hex and nut driver, 13-piece, includes premium handle (medium), travel pouch, hex drivers (straight: 1.5mm, 2.0mm, 2.5mm, 3.0mm), (ball-end: 2.0mm, 2.5mm, 3.0mm), and nut drivers (4.0mm, 4.5mm, 5.0mm, 5.5mm, 7.0mm, 8.0mm), 1/4" drive
8711	Speed Bit Master Set, hex driver, 7-piece straight and ball end, includes premium handle (medium), travel pouch, hex drivers (straight: 1.5mm, 2.0mm, 2.5mm, 3.0mm) (ball end: 2.0mm, 2.5mm, 3.0mm), 1/4" drive
8719	Speed Bit Master Set, nut driver, 6-piece, includes premium handle (medium), travel pouch, and nut drivers (4.0mm, 4.5mm, 5.0mm, 5.5mm, 7.0mm, 8.0mm), 1/4" drive
8716	Speed Bit Set, hex driver, 2-piece ball-end (2.0mm, 2.5mm), 1/4" drive
8716X	Speed Bit Set, hex driver, 3-piece ball-end (2.0mm, 2.5mm, 3.0mm) 1/4" drive
8715	Speed Bit Set, hex driver, 3-piece straight (1.5mm, 2.0mm, 2.5mm), 1/4" drive
8715X	Speed Bit Set, hex driver, 4-piece straight (1.5mm, 2.0mm, 2.5mm, 3.0mm), 1/4" drive
8714	Speed Bit Set, screwdriver, 3-piece straight (3mm slotted, #1 Phillips, and #2 Phillips bits), 1/4" drive
2748R	Tool set (includes 1.5mm hex wrench / 2.0mm hex wrench / 2.5mm hex wrench/ 4-way wrench/ 8mm & 4mm wrench/ U-joint wrench)
3415	Tool set with pouch (includes 1.5mm, 2.0mm, 2.5mm, 3.0mm, 3.5mm, 4mm drivers/4mm. 5mm, 5.5mm, 7mm, and 8mm nut drivers/ 2mm, 3mm, and 4mm slotted screwdrivers/ #00 Phillips, #0 Phillips, and #1 Phillips screwdrivers/ 4mm and 8mm wrenches/ driver handle)

If you have questions or need technical assistance, call Traxxas at:

1-888-TRAXXAS

(1-888-872-9927) (U.S. residents only)

For orders, calls outside the U.S., and other information, call 972-549-3000, or fax to 972-549-3011 e-mail Traxxas at support@Traxxas.com

TRAXXAS.COM